

Nex.Portal

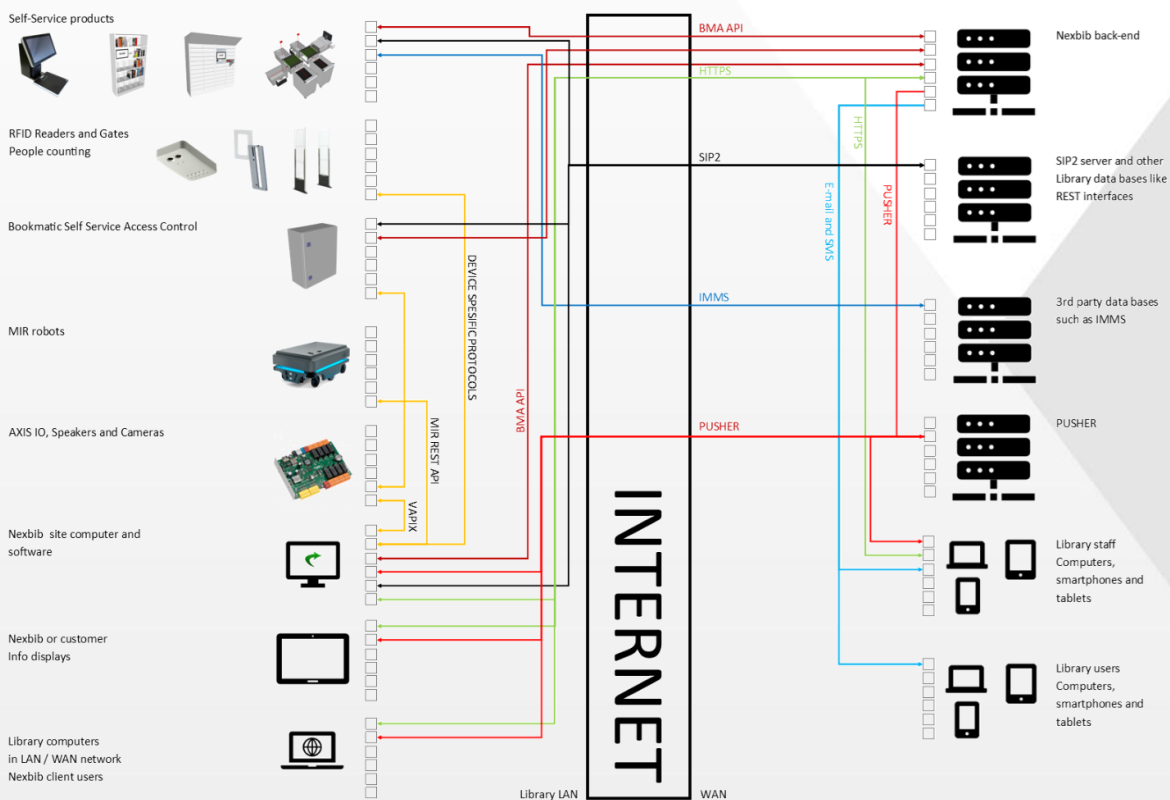
Back-end management for library automation

Nex.Portal is a secure cloud-based management platform for all connected devices within the library.

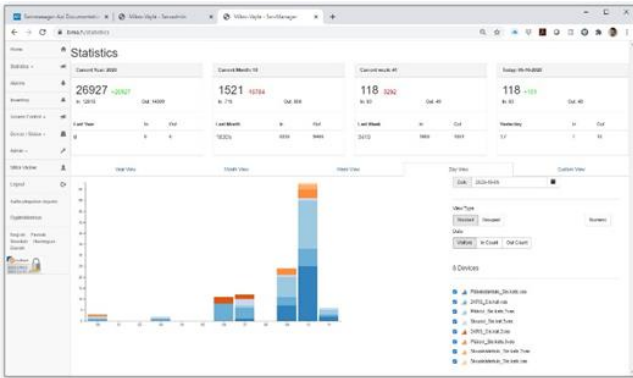
Its intuitive web based user interface can generate statistics reports, visualize device health status, and generate email or SMS alerts when there is a problem. View and edit system configuration in real time and download log files for analysis.

A sophisticated API allows Nex.Portal to communicate with a broad range of devices from a simple people counter to advanced robotic systems from Nexbib or a third party.

Built in inventory tools, scheduled tasks and access control functions make it an invaluable tool for the modern connected library.

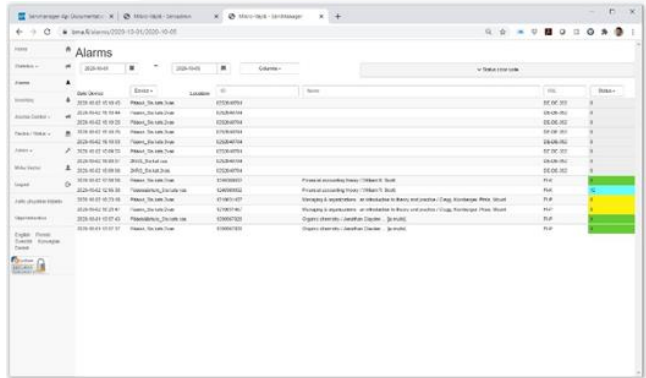


Technical Specifications



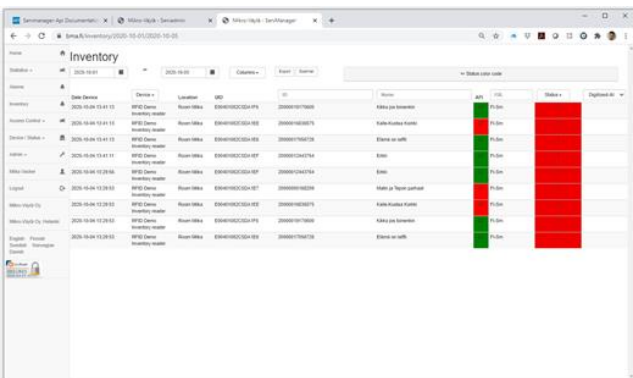
Statistics

See all visitor statistics in one place. People counters and gate statistics for in / out, but also adult / youth / child statistics based on advanced counters able to measure people's height.



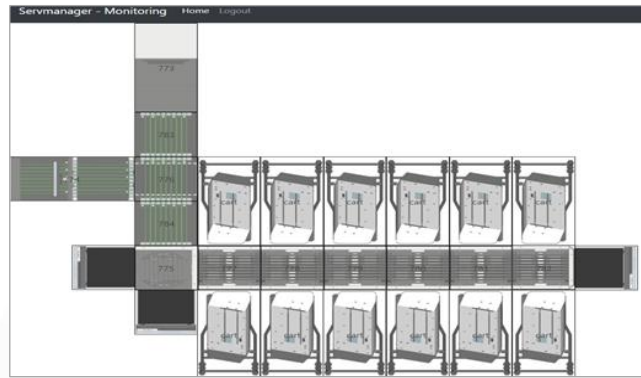
Physical and Environmental characteristics

Gate alarms in real time. See real time status and statistics for intelligent shelf and locker systems. Update and download device configuration.



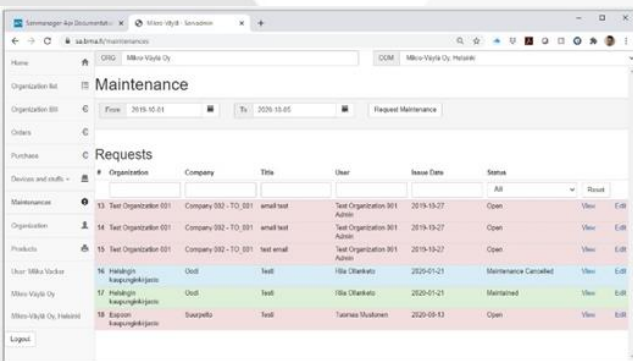
Inventory

Inventory data in real time. Automatically stores inventory data. With SIP2 connection get detailed info and search missing items and other categories.



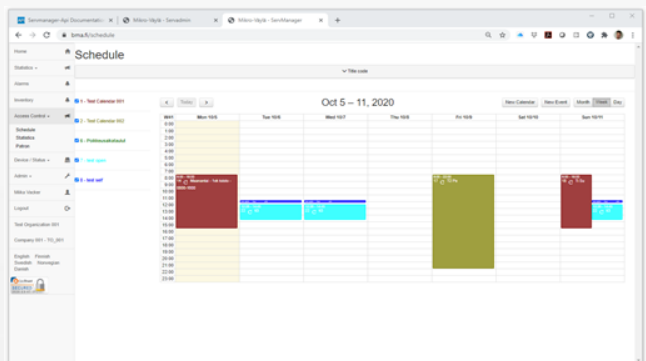
Monitor

Monitor your devices in real time. All device statistics are stored. See Self-Check statistics and compare usage for previous year / month / week. Export data for further analysis.



Maintenance

Ticketing system for service and maintenance. Nexbib Classic admin sends notifications by email or SMS.



Access control

Schedule tasks and monitor access to your library. Set schedules for self-service times and other functions.